

Dynamic Warehouse Solutions Capability Statement Projects & Case Studies



Ph. 1300 668 468

sales@dynamicws.com.au

www.dynamicws.com.au

 **dynamic**
WAREHOUSE SOLUTIONS



CUSTOMER FIRST

We strive to offer the best customer service and experience from the start of a project to the after care.



TRUST

We take pride in our work and always believe in doing the right thing.



WE CARE

We nurture all our working relationships and value our customers, our suppliers and our staff and colleagues.



SOLUTION ORIENTATED

Using innovative, creative, thinking, we provide solutions to problems that customers face in their world.

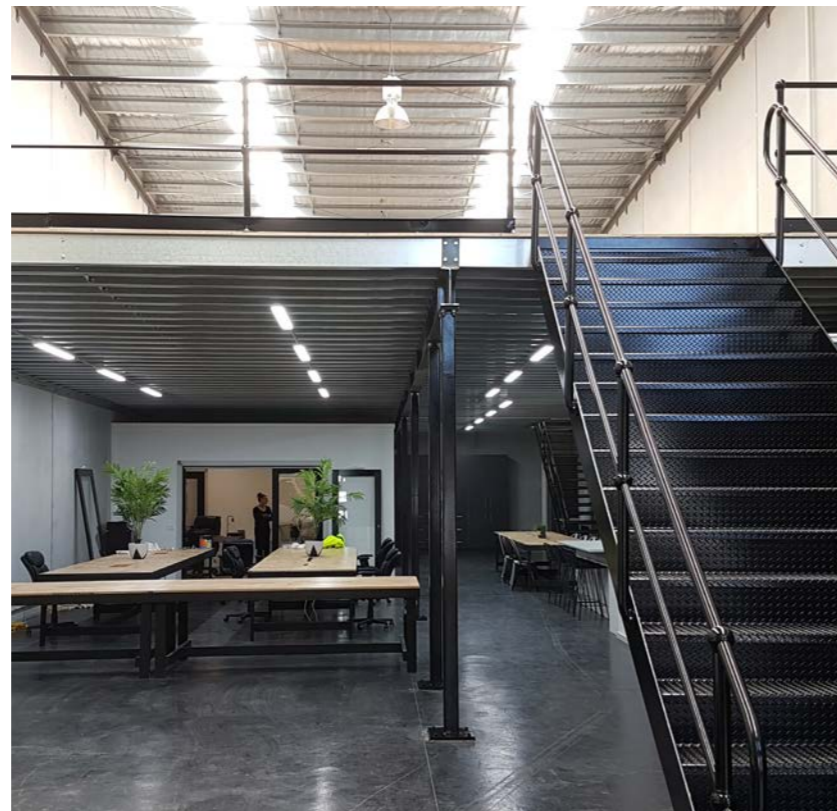
Our Company

We specialise in designing, creating and building innovative storage solutions for productive workplaces.

We are a proudly local family, owned and operated business servicing Melbourne and Regional Victoria.

We have over 15 years experience in warehouse design and are specialists in creating workspaces, that meet the needs of our clients and increase staff productivity, morale and retention.

Dynamic Warehouse Solutions specialise in the design, supply and installation of the quality warehouse storage solutions including mezzanine floors, mezzanine offices, pallet racking, shelving, warehouse equipment and retail shelving.



Call us today to discuss your project.
 ↗ 1300 668 468

Our Project Team

Meet our Project Team. Along with our support teams, we are a group of experienced, motivated professionals who specialise in warehouse fit-outs and providing high quality customer service. We are your point of call.



Scott Barker
 Director/Sales Manager



Bradyn Barker
 Sales



Neil Nickless
 Production Manager/ Steel Detailing



Georgina Perry
 Contracts Admin



Karl Digiglio
 Warehouse Manager



Phillip Espenschied
 Project Manager

I am passionate about working with our clients to design and construct modular, prefabricated mezzanine floor solutions to best suit their needs.”

— **Scott Barker**
 Director/Sales Manager

The possibilities are endless. We will tailor a custom solution based on your requirements.



DESIGN

We will create a tailored warehouse solution for you to suit your site and functional requirements. We offer both modular mezzanine and custom mezzanine designs.



SUPPLY

We are a turn-key solution for all your warehouse fit-out needs. We offer both modular mezzanine and custom mezzanine designs as well as storage and racking solutions.



INSTALL

Our team of project managers and mezzanine floor specialists will look after the installation and quality construction of your project; on-time and on budget.

OUR PROJECT BUILD PROCESS



01

01. On-site Consultation

We gain in-depth understanding of your current and future storage needs and evaluate your current workflow methods, pedestrian walkway requirements.



02

02. Mezzanine Design

A free concept layout and design service is provided. Our team will present you with a recommended solution based on your needs. A full measure up and assessment of existing work spaces to develop a design to best benefit your business.

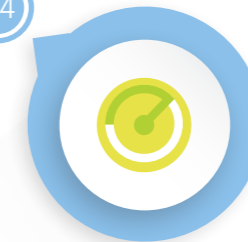


03

03. Quality Products

All of our products are backed up by a minimum 5 year warranty and are quality tested to Australian Standards. We have our own manufacturing facility to design and construct mezzanine floors, raised office areas and maintenance platforms, staircases and pallet loading gate etc. This means we can cater to your individual requirements rather than something available off the shelf.

04



04. Project Delivery

Your dedicated project manager will take care of every little detail along the way, ensuring your new mezzanine floor is delivered and installed correctly, efficiently and safely.

05



05. After Care

We've got your future covered too. We will conduct product usage training and care, complete inspections and maintenance and an relocate your mezzanine floor should you require to move in the future.

📞 Call us today about your project on
1300 668 468 to organise a measure
and quote tailored to your needs

Plumbtec



SITE

Ballarat

FUNCTION

Retail & Warehouse Storage

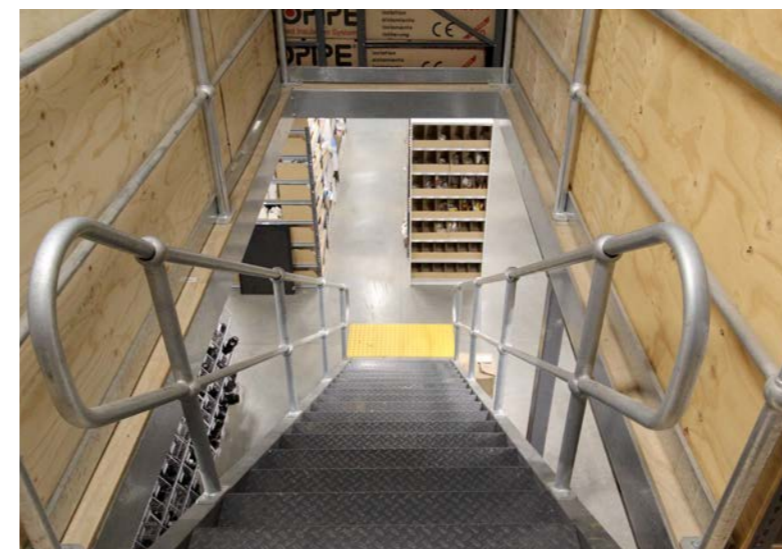
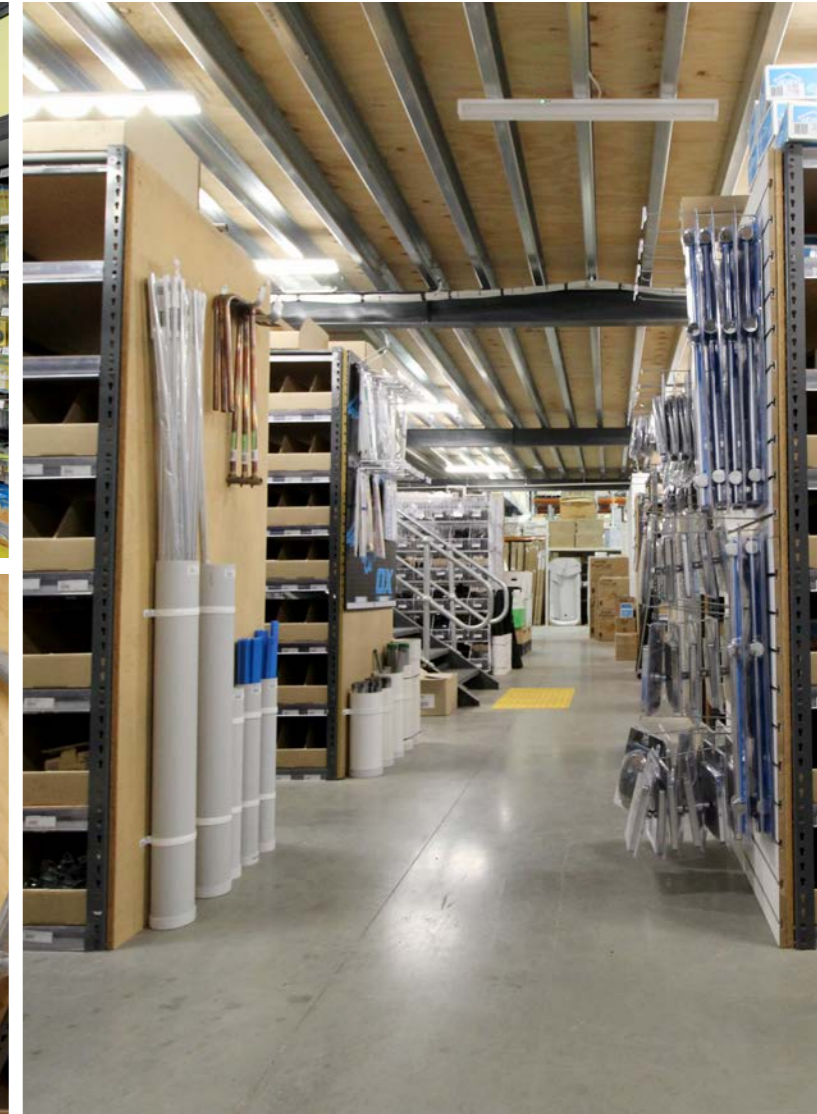
DESIGN

- 430m²
- 3Kpa (300Kg per m2) Load rating
- Steel stairs
- Roll-over style pallet loading gate
- Black powder-coated balustrade to showroom area
- Showroom fit-out on mezzanine
- Ceilings/lighting below mezzanine

OVERVIEW

Dynamic were very pleased to be part of this recent project. Plumbtec engaged us early in the planning process to design, supply and install a 430m² Mezzanine floor in their new Alfredton store. The mezzanine design was fully fitted out with offices below and a showroom and open storage area above!

The client was very happy with the end result which has massively increased showroom floor area and storage space, at a fraction of the cost when compared to the option of increasing the building footprint. We have since been given the job to extend the mezzanine a further 70m² to create even more cost effective storage space.



Eat Well Foods



Site

Kyneton

Function

Food Manufacturing and Storage

Design

- 380m²
- 5Kpa (500Kg per m2) Load rating
- Custom steel stairs with landing.
- Custom roll-over style pallet loading gate
- Galvanized Ball-Tube Handrails
- 4000mm Floor height

Overview

We installed a 5kpa 380m² mezzanine floor using our pre-engineered Hi-Span modular system.

The client wanted to utilize unused space over their existing cool room.

We were happy to accept the challenge.

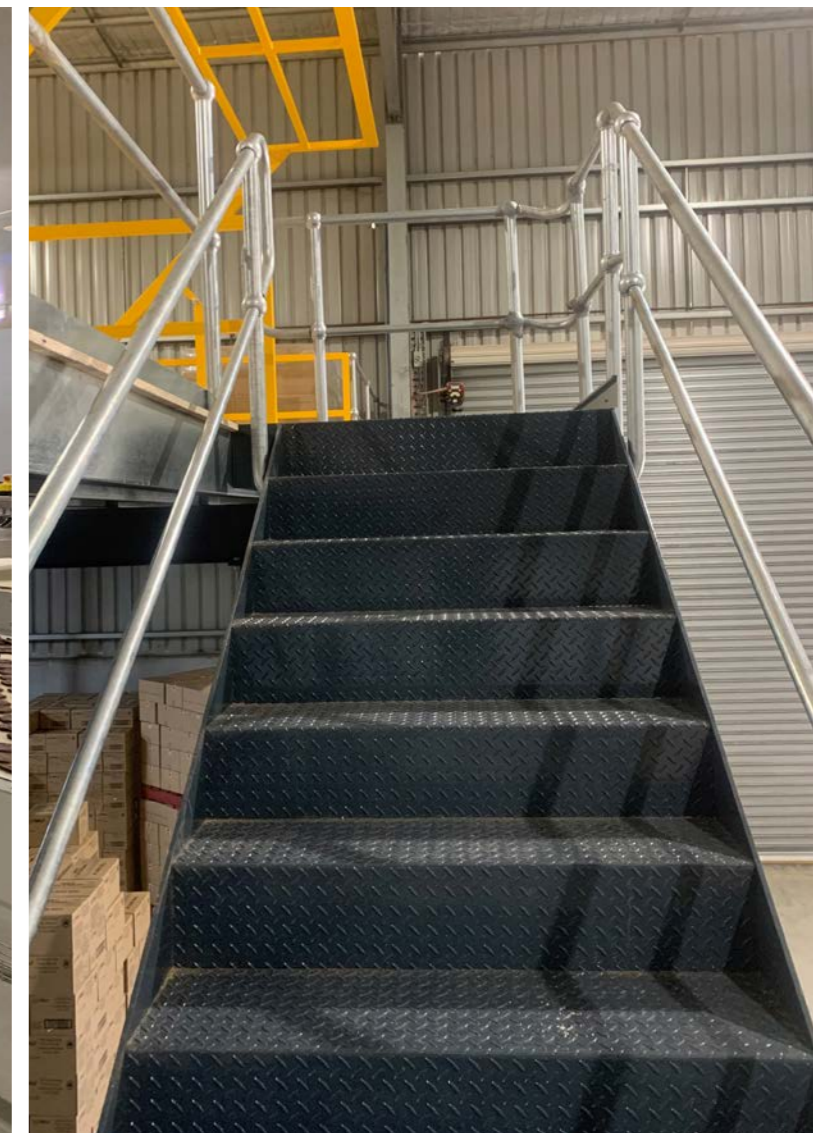
We were able to accomplish this task by propping the ceiling from the inside to make it safe to work on. Then we penetrated the ceiling to install our columns/beams and purlins.

We then re-suspended the ceiling causing little disruption to the business production line.

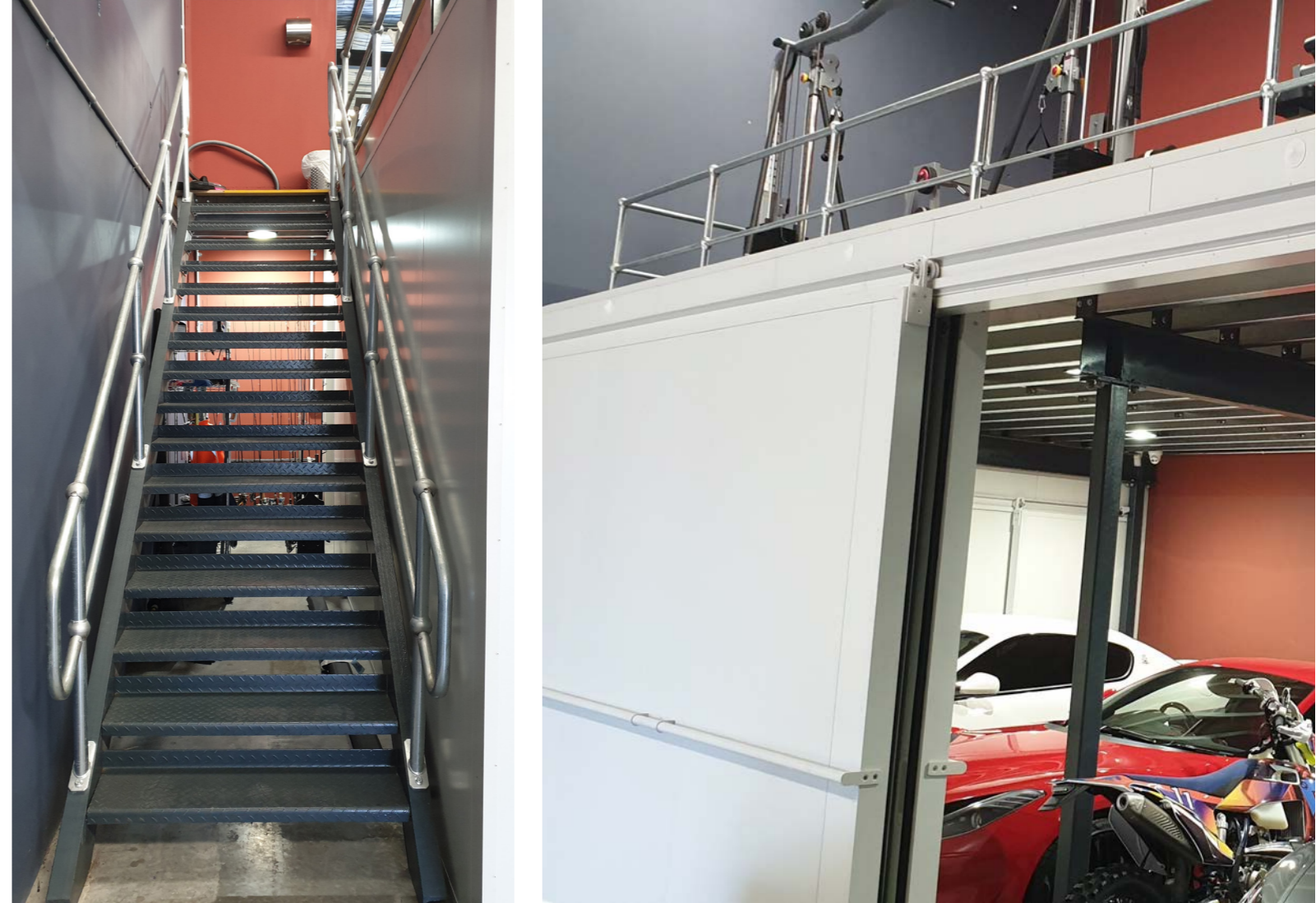
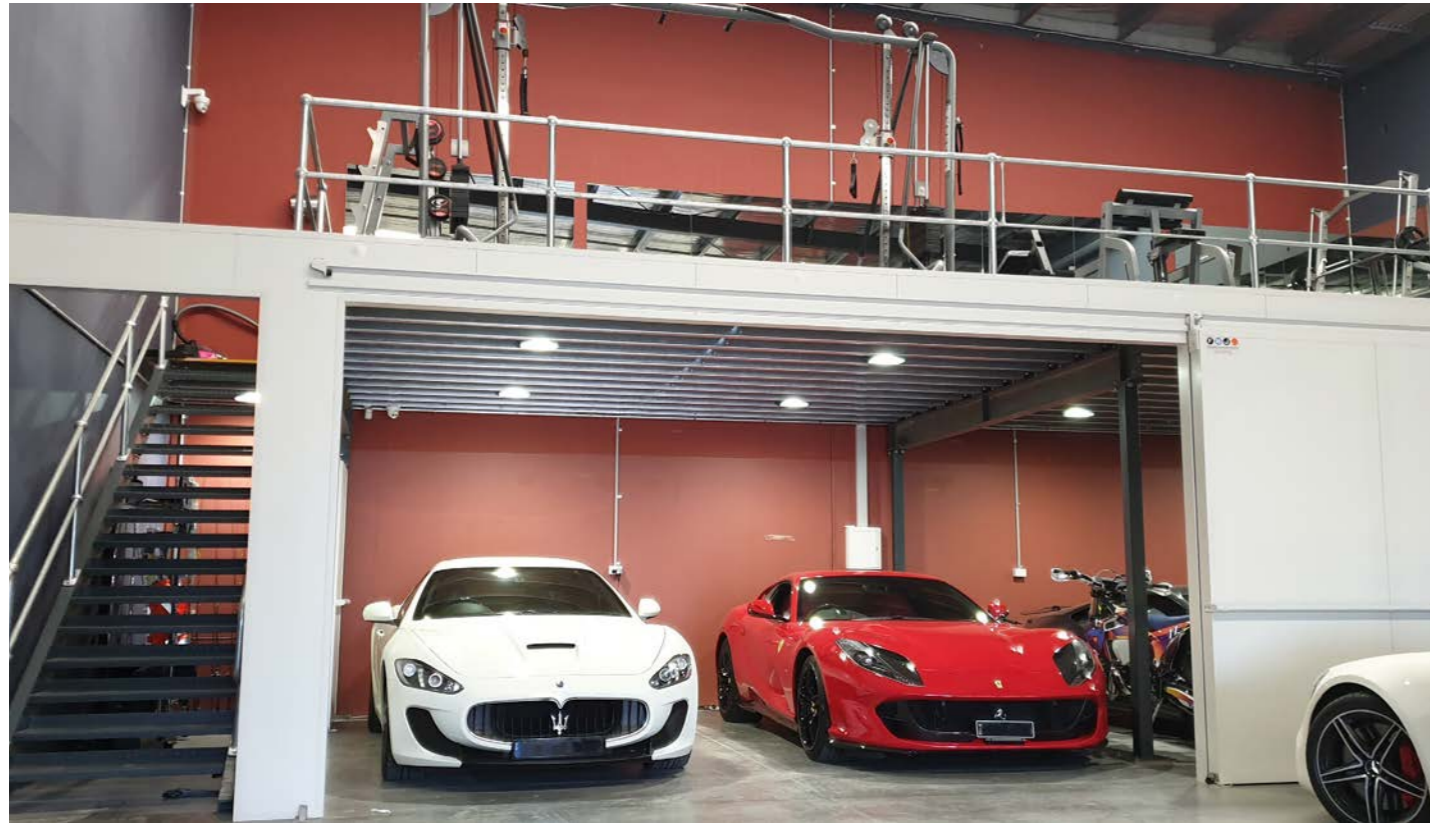
We created a custom 4 meter high stair with mid landing and Ball-Tube handrails.

We installed a custom Verge safety gate, able to cater for 2 pallets @ 2400mm high.

Once again, a quick, efficient and cost effective way to maximize the business floor space with the project taking only 6 days to complete.



Coburg Warehouse



Site

Coburg

Function

Automotive Garage, Gym and Storage

Design

- ~ 5 Kpa Loading capacity
- ~ Freestanding Design
- ~ 3400mm FFL
- ~ 19mm Plywood Flooring
- ~ Bondor Panel Walls to enclose under mezzanine
- ~ Large sliding doors
- ~ LED Lighting

Overview

A recent mezzanine installation for a client requiring a mezzanine for a home gym above and an enclosed room below. The project was complete with large sliding doors to store their collection of cars.

Our Hi-Span Mezzanine System worked out perfectly for this application.

Thomastown Warehouse



Site

Thomastown

Function

Garage and Storage

Design

- 260m²
- 5 kpa (500kg per m² Load rating)
- 19mm Structural Plywood Flooring
- Yellow Powder-Coat Safety pallet loading gate
- 3400mm Floor height
- Freestanding Design
- Steel stairs with Checkerplate treads
- Galvanised balltube handrails

Overview

A nice Hi-Span storage mezzanine recently completed for a happy client in Thomastown, Victoria.

The client was after a freestanding mezzanine for storage above whilst maximising floor space for a vehicle hoist and caravan storage.

BCA Commercial



Site

Somerton

Function

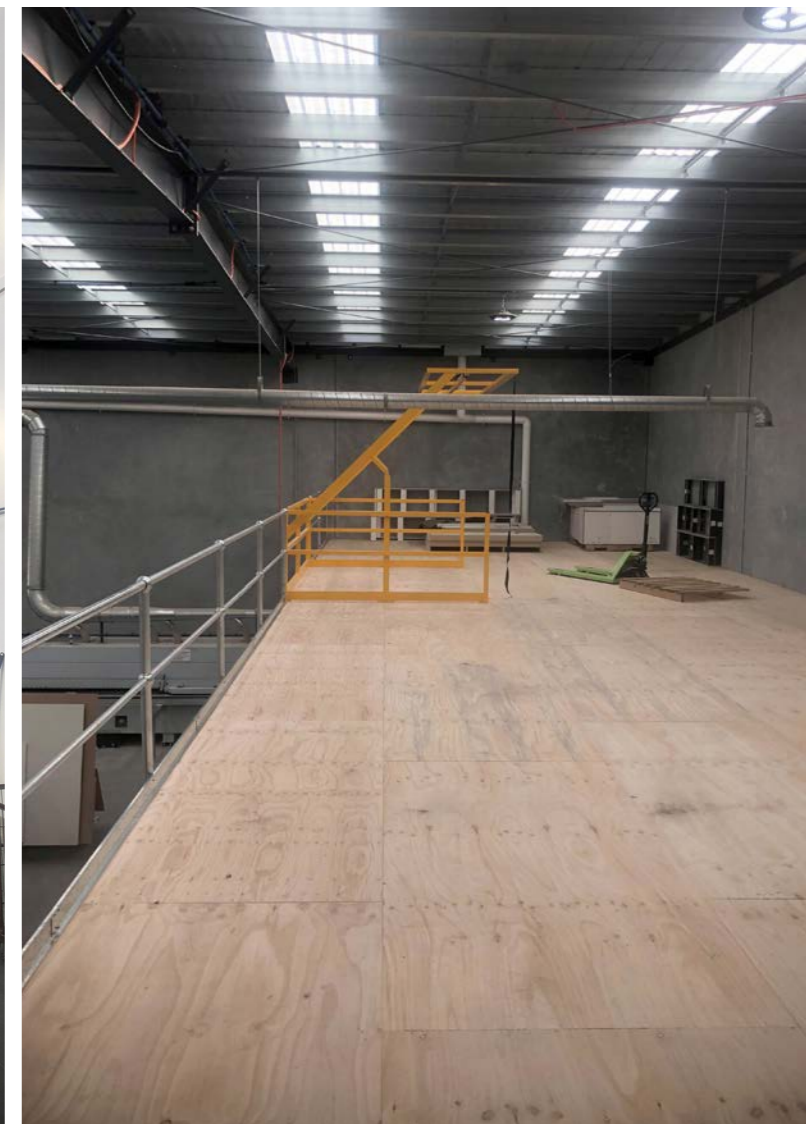
Manufacturing and Storage

Design

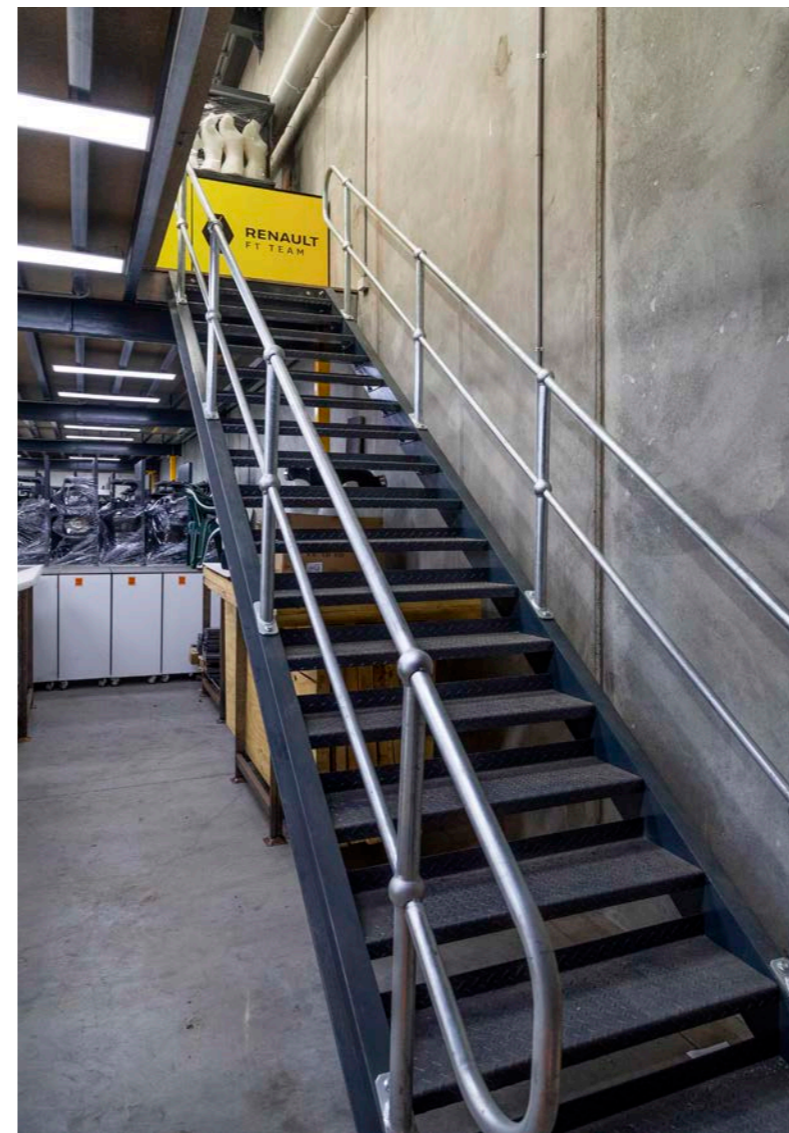
- 5 kpa (500kg per m2 Load rating)
- 19mm Structural Plywood Flooring
- Yellow Powder-Coat Safety pallet loading gate
- ~ Led lighting underfloor
- Steel stairs with Checkerplate treads
- Galvanised balltube handrails
- Freestanding Design

Overview

We installed two Hi-Span storage mezzanines recently for a client in Melbourne. The project was complete with stairs, a mezzalad access ladder and Yellow Powder-coat safety loading gate.



Event Retail



Site

Melbourne

Function

Storage

Design

- ~ 3 kpa Floor Loading
- ~ 22mm Particleboard Flooring
- ~ Safety rollover loading gate

Overview

A recent 200m² mezzanine completed using our Hi-Span Mezzanine System. The project was complete with Led panel lighting beneath and custom yellow painted posts.

Farming Storage



Site

Waurn Ponds

Function

Storage Solution

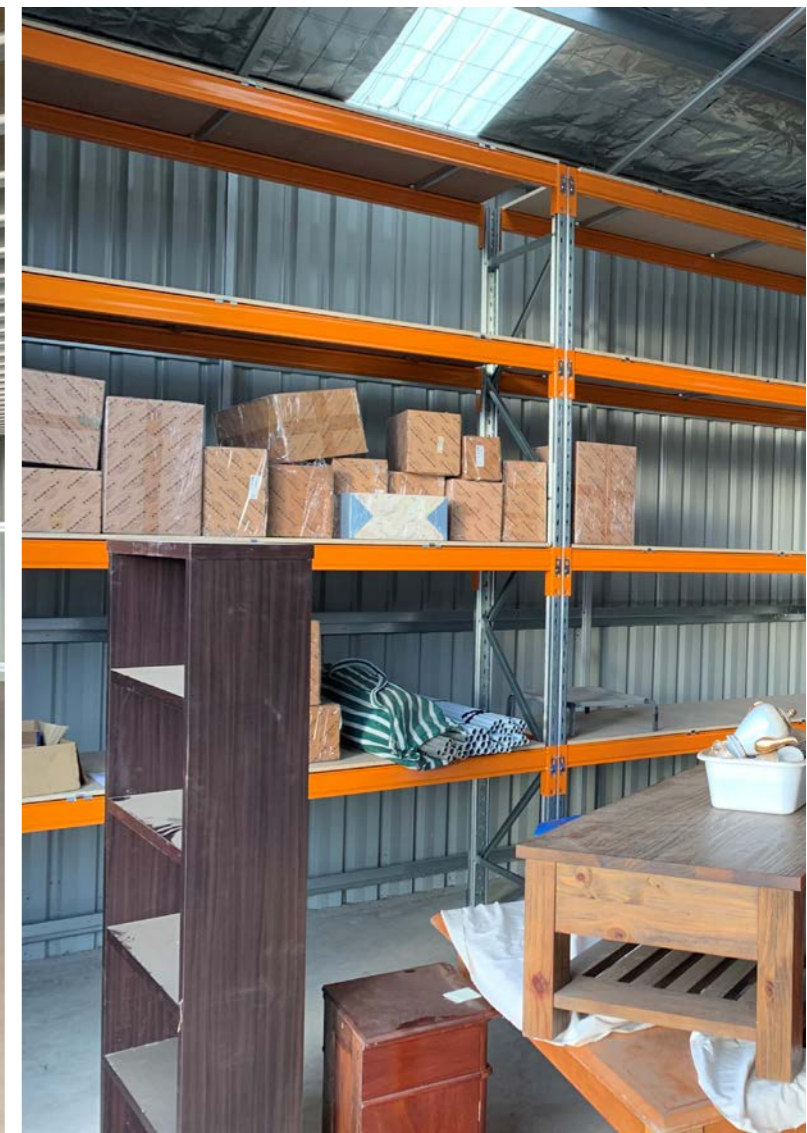
Design

- 108m²
- Load rating of 500Kpa (500kg per m²)
- 19mm Plywood Flooring
- Steel stairs
- Galvanized Ball-Tube Handrails to the edges of the Mezzanine with a sliding gate
- Installation of Pallet Racking

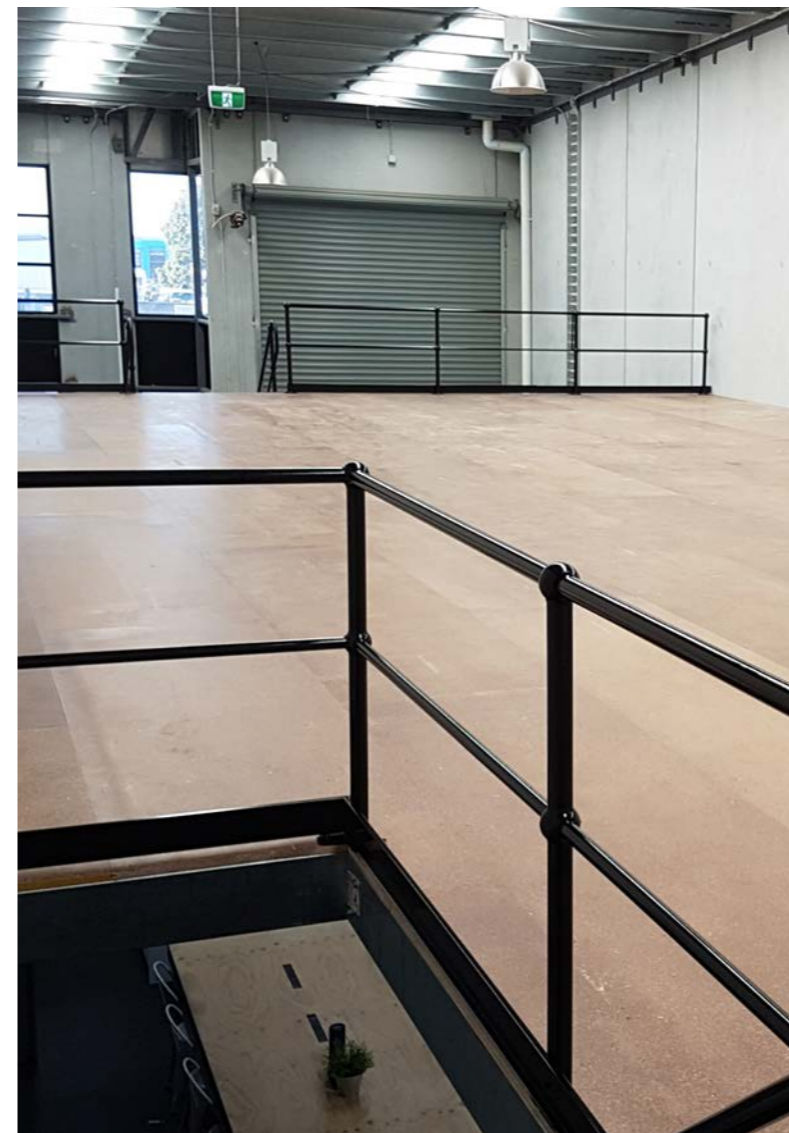
Overview

This job was carried out recently for a client to maximise storage on a family farm in Waurn Ponds.

The project was delivered on time and to the clients expectations.



Hero HQ



Site

Pakenham

Function

Office Workspace

Design

- 200m²
- 3Kpa (300kg per m² Load rating)
- 22m Structaflor Particleboard Flooring
- 3400mm Floor height
- Attached to existing concrete panel walls
- Custom enclosed tread steel stairs
- Galvanised balltube handrails that were painted Black

Overview

Dynamic Warehouse Solutions were pleased to work in with our client, Hero HQ, on this project to deliver a storage mezzanine enabling them to double their storage capacity whilst still utilising the ground floor for open plan office and breakout areas for their staff.

Custom black steel stairs and black balltube handrails complement the edgy industrial look and feel.

Global Specialised Services



Site

Tullamarine

Function

Warehouse Storage

Design

- 350m²
- 5Kpa (500kg per m² Load rating)
- 22m Structaflor Particleboard Flooring
- 3400mm Floor height
- Freestanding structure design
- Coolroom panel walls
- Specialist Lighting and HVAC systems

Overview

Dynamic Warehouse Solutions were commissioned by Global Specialised Services to design and construct a controlled environment storage area for the storage of artwork and sculptures.

A 350m² clear span enclosed mezzanine structure enabled the client to double their storage space whilst creating a dust free, controlled environment.



Kettle Fit Gym



Site

Port Melbourne

Function

Health & Fitness

Design

- 120m²
- 5Kpa (500kg per m² Load rating)
- 22m Structaflor Particleboard Flooring
- 3300mm Floor height
- Freestanding Structure Design

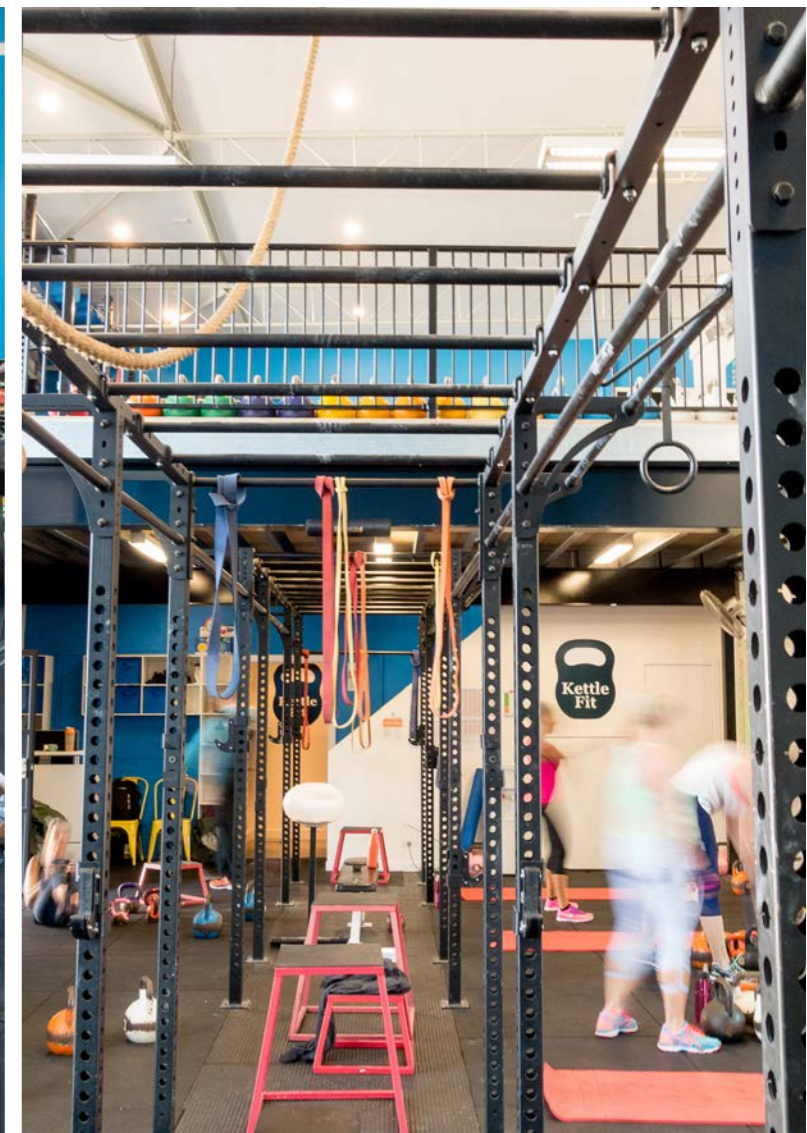
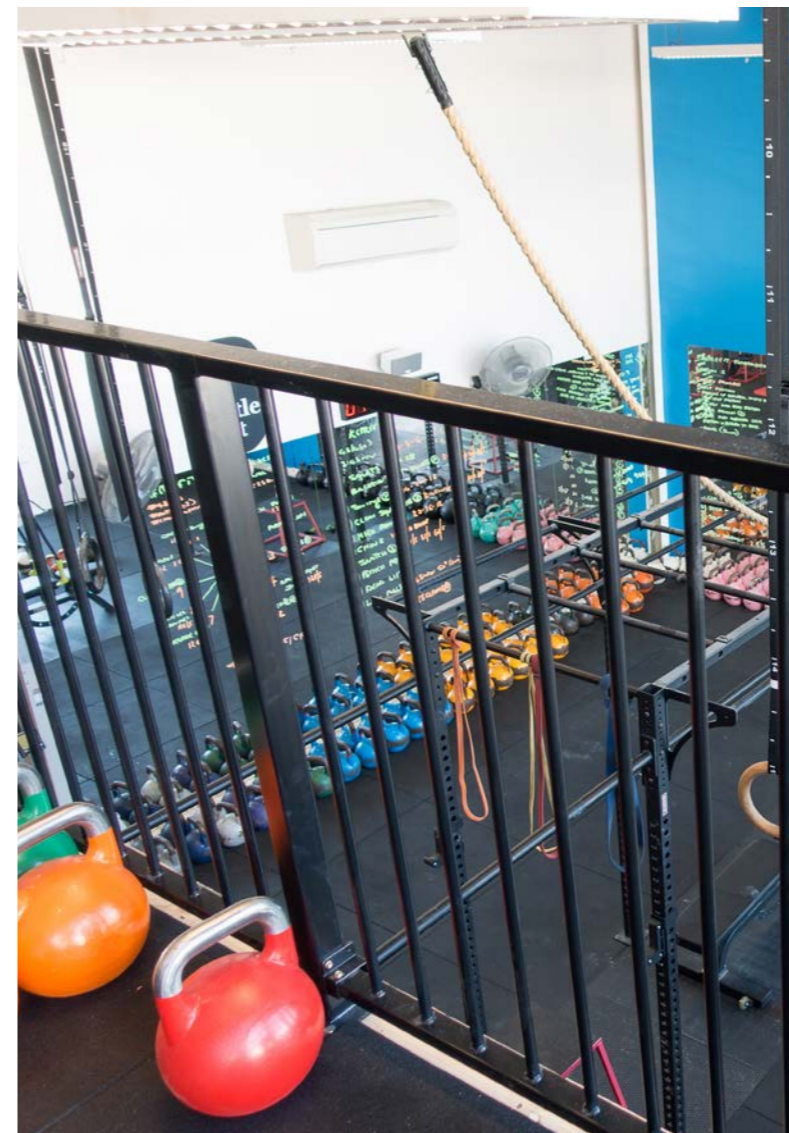
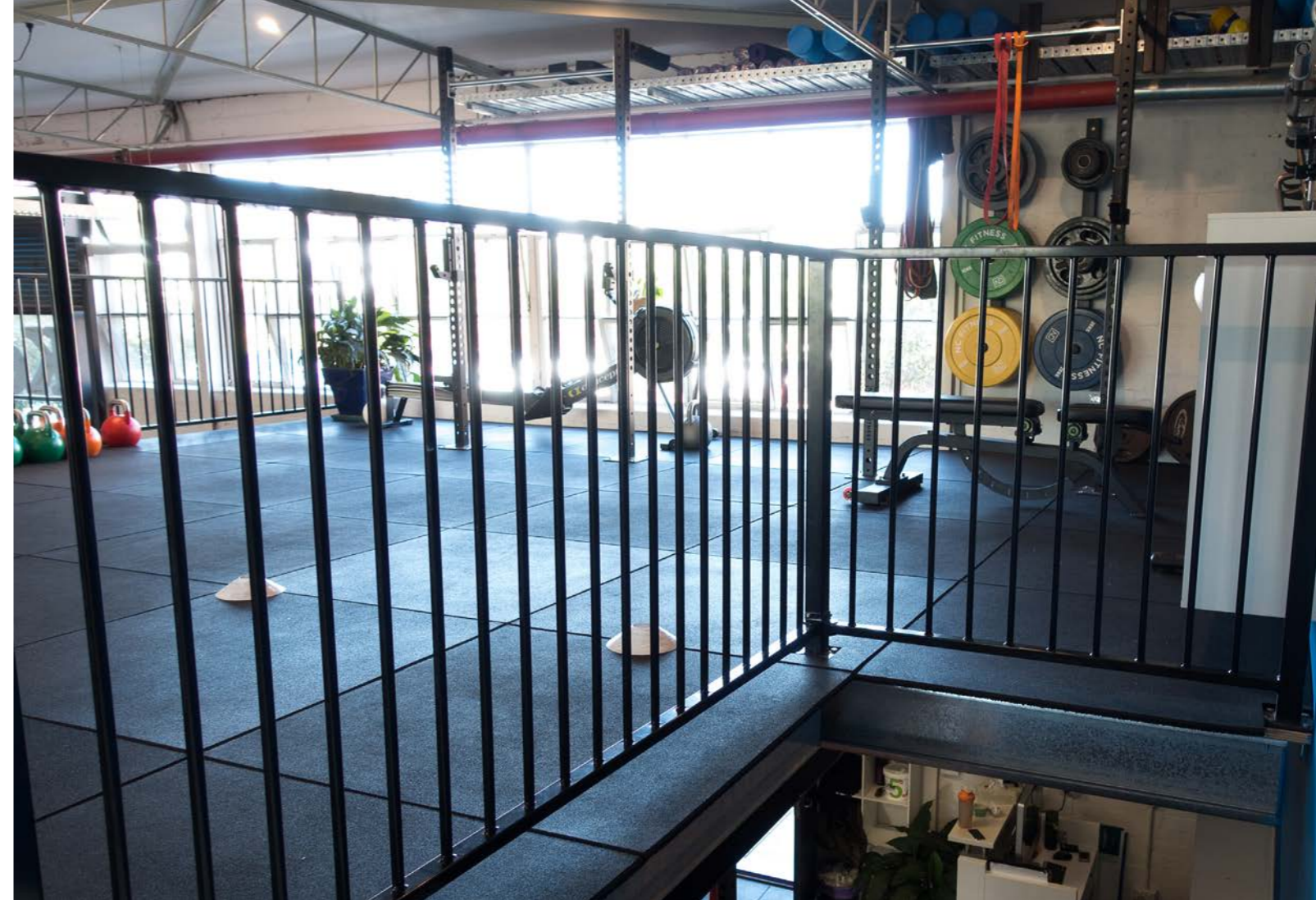
Overview

Kettle Fit Gym has utilised their gym space more efficiently by installing one of our mezzanine floors. Our mezzanine floors can be customised to suit any workspace.

“...being able to watch a job progress from the planning stages all the way to hand over whilst meeting all the client’s needs is really satisfying.”

– Nathan Duggan

Project Manager



Anytime Fitness



Site

Moonee Ponds

Function

Health & Fitness

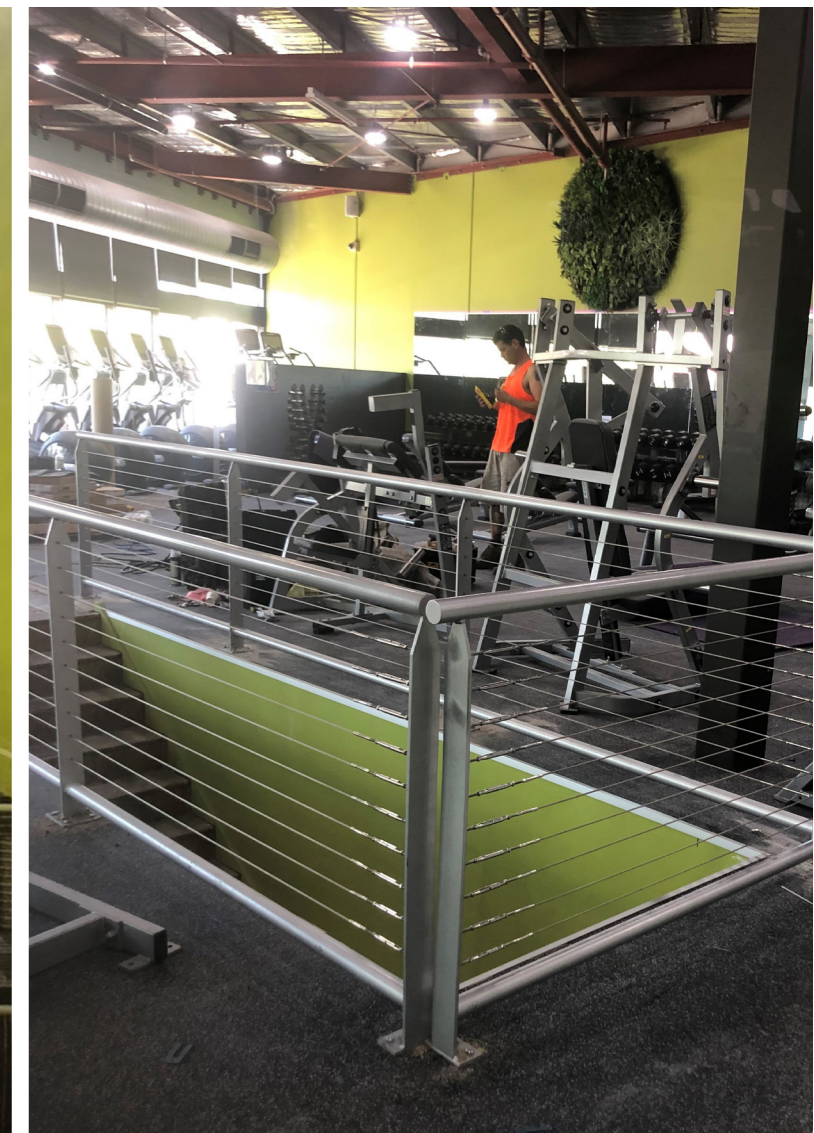
Design

- 210m²
- 5Kpa (500kg per m² Load rating)
- 22m Structaflor Particleboard Flooring
- 3300mm Floor height
- Freestanding Structure Design
- Demolition of existing facilities
- Supply and install Track Lighting to underside of mezzanine
- Build New bathrooms/changerooms, including full height tiling, recessed showers and disability compliant bathrooms

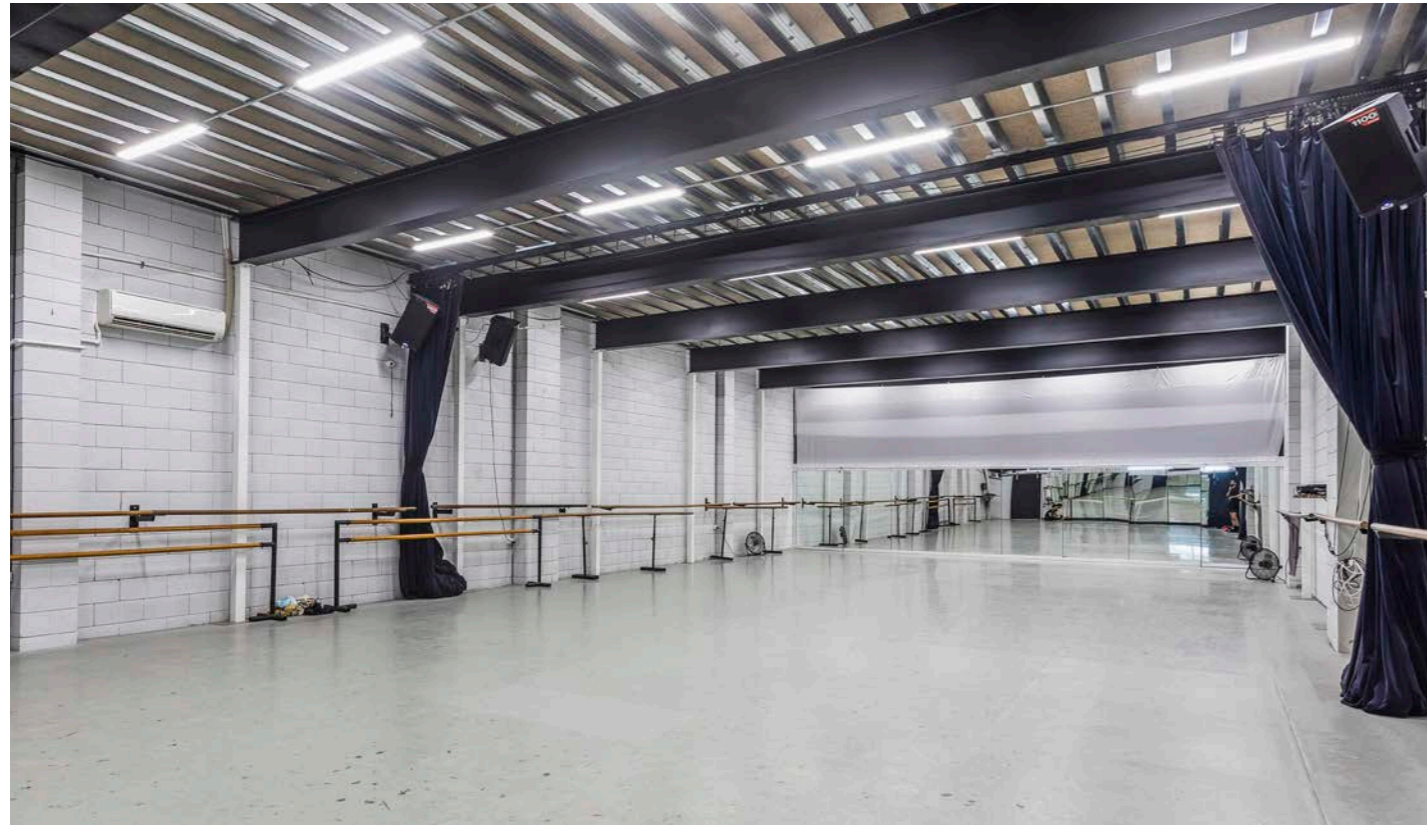
Overview

Dynamic were pleased to be chosen to carry out recent renovations for Anytime Fitness Moonee ponds this entire project was completed within a 3 week period to minimise restrictions to their clients gym access.

The owners are extremely happy with the end result and the minimal disruption to their business.



VS Ballet



SITE

Bundoora

FUNCTION

Health & Fitness

DESIGN

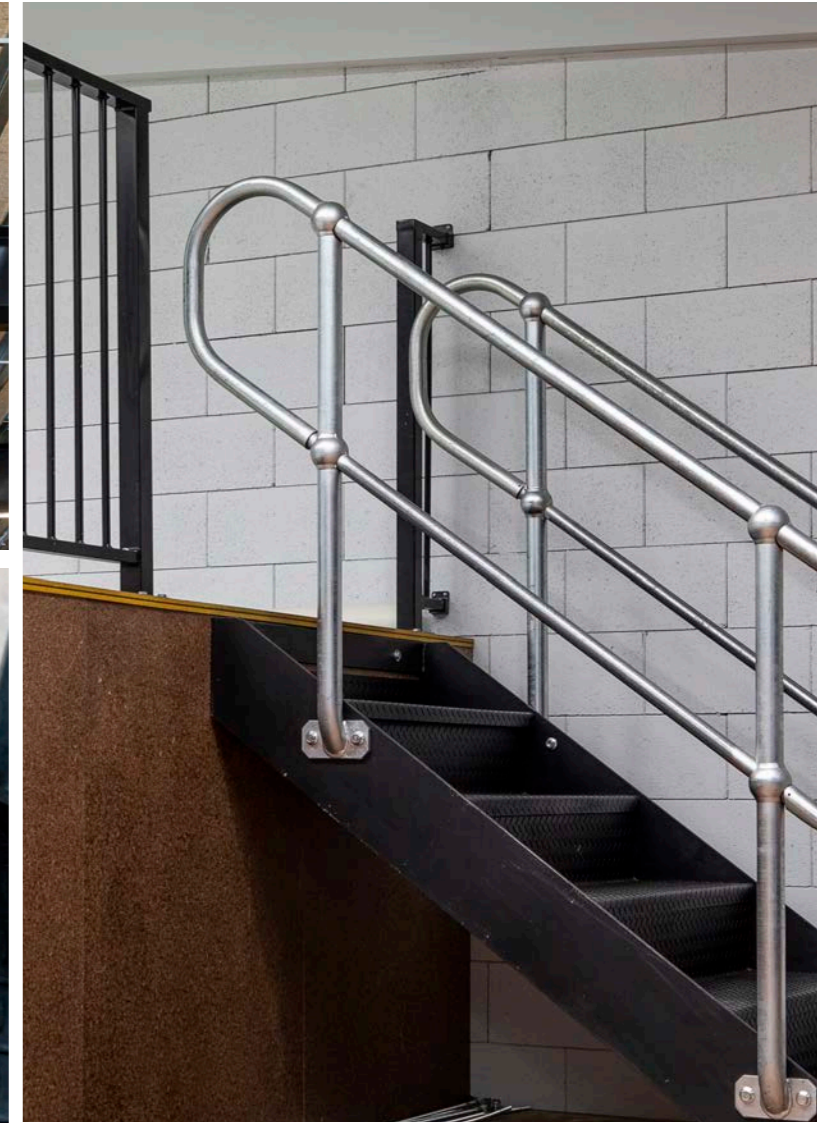
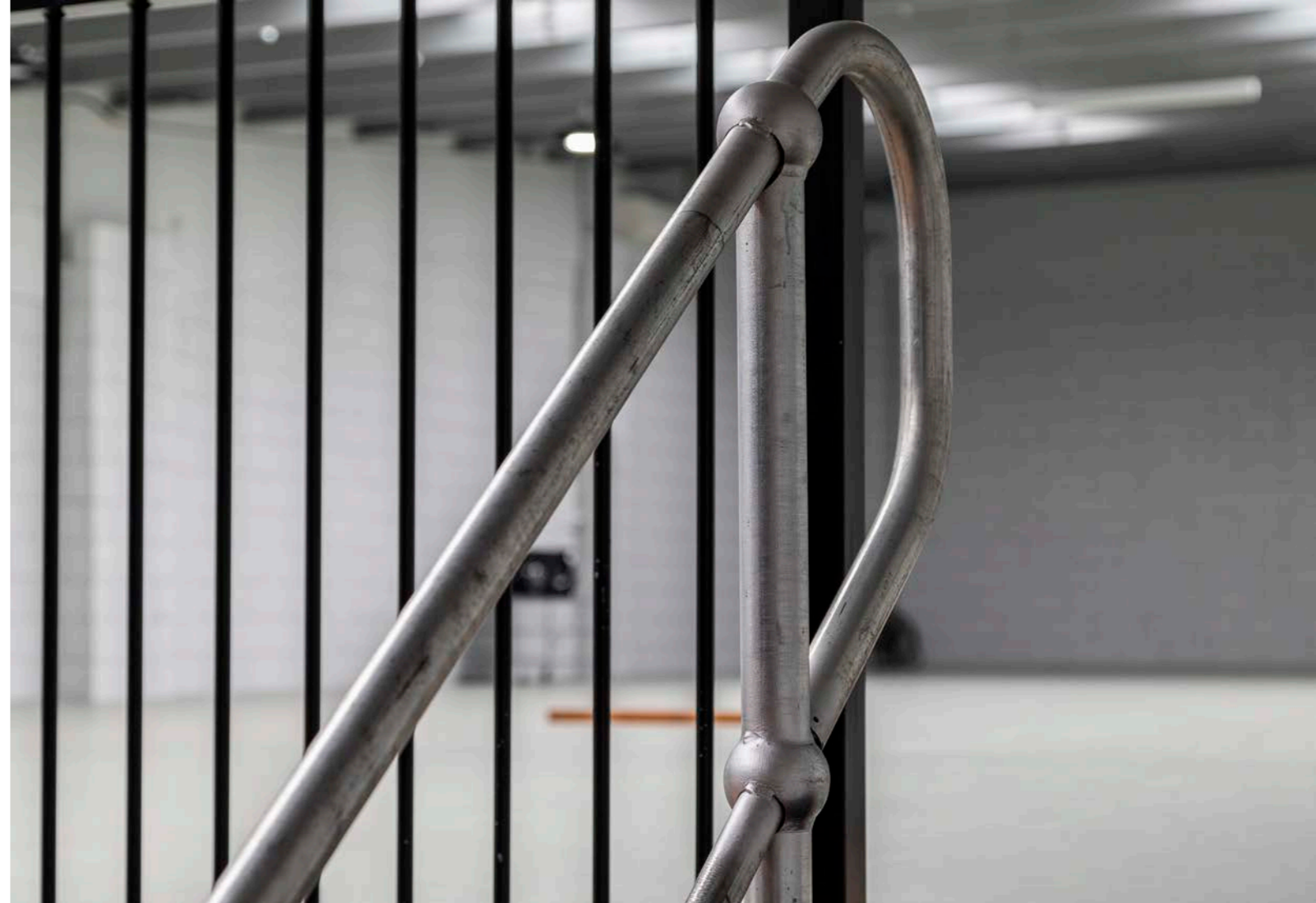
- 308m²
- 5 Kpa Floor loading
- 22mm Structaflor particleboard flooring
- Split level design
- 9.8M Clear span
- Black powdercoated balustrades
- Custom paint colour
- LED lighting under mezzanine

OVERVIEW

Dynamic were selected to design and construct a mezzanine for a second level dancefloor. A requirement of the design was to leave the entire ground floor clear with no posts for uninterrupted use. This meant a clear span of 9.8m wide. The mezzanine was also required to be split level to maximise the use of the available height in the building.

Custom colour posts, beams and balustrade finish the sleek look. The clients were extremely happy with the end result.

This project is another example of a project delivered on time and under budget.



Kalow Holdings



SITE

Chirnside Park

FUNCTION

Warehouse Storage

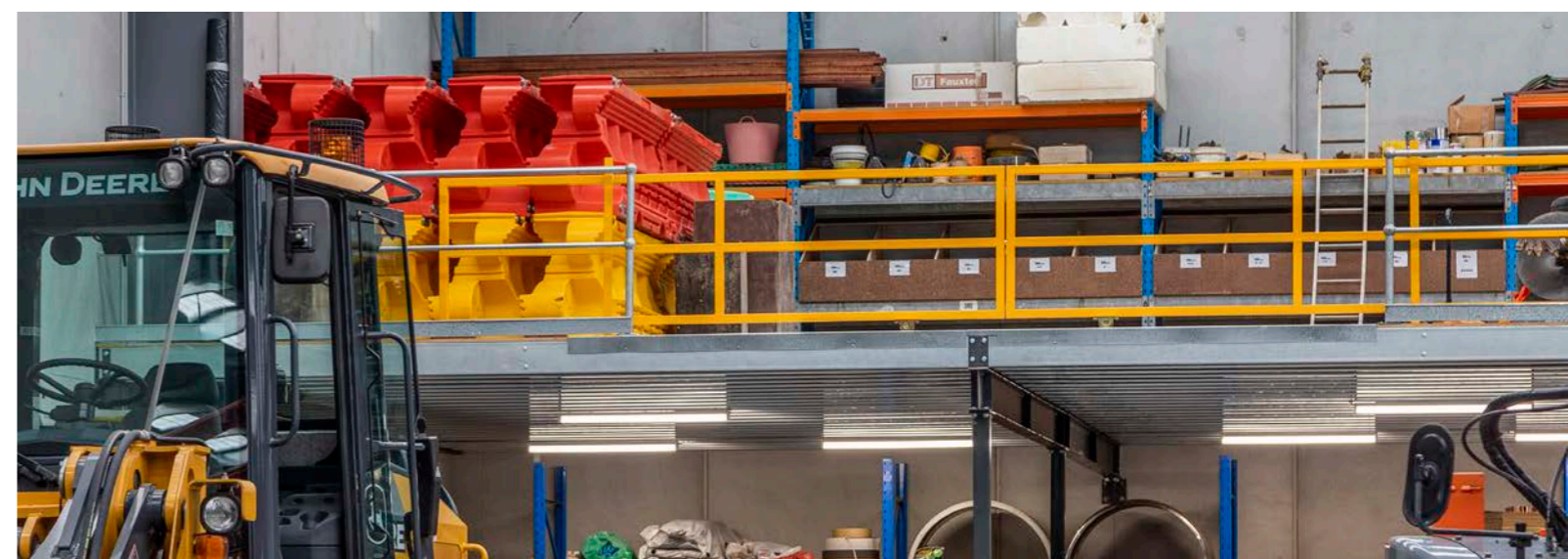
DESIGN

- 110m²
- 3 kpa (300kg per m² load rating)
- 22m Structaflor Particleboard Flooring
- 3400mm Floor height
- Mezzanine attached to existing concrete panel walls
- Galvanised balltube handrails
- Custom Safety Sliding gate in powdercoated yellow

OVERVIEW

Kalow holdings approached us to design and construct a mezzanine storage structure. The brief was to provide a clear span mezzanine to maximise storage of machinery and equipment and be cost effective.

Our Hispan modular system enabled us to provide a cost effective pre-engineered system to meet their design and time requirements and exceed their expectations.



Black Snake



SITE

Bayswater

FUNCTION

Warehouse Storage

DESIGN

- 260m²
- 5 kpa (500kg per m² Load rating)
- 19mm Structural Plywood Flooring
- Custom powdercoat colours;
Charcoal for the structural steel and
Yellow for the Safety pallet loading gate
- 3400mm Floor height
- Freestanding Design
- Steel stairs with Checkerplate treads
- Galvanised balltube handrails

OVERVIEW

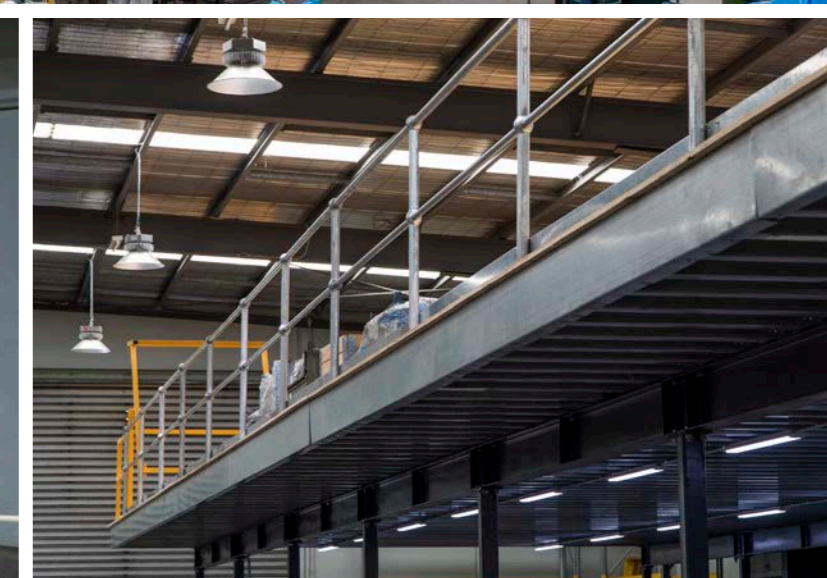
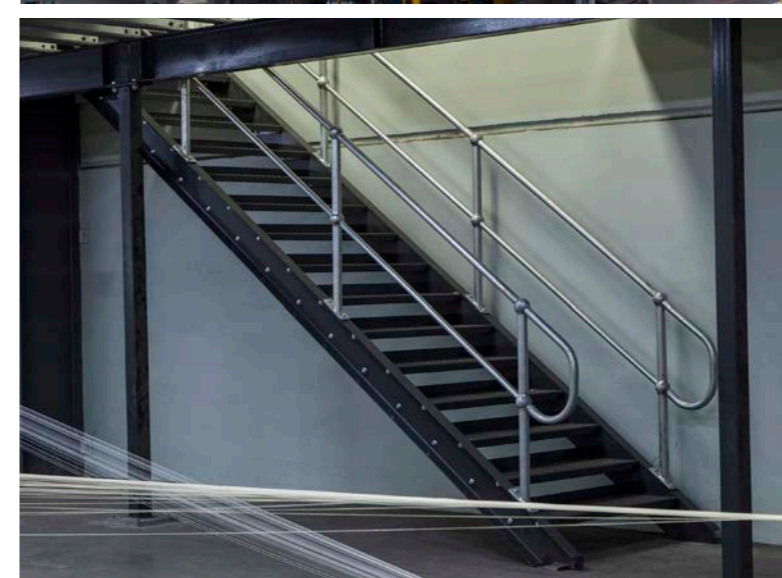
A nice storage mezzanine installed over the top of a production area which required clear access under the mezzanine with minimal posts,

Our modular Hi-span system works well providing large clear spans under the mezzanine and a 5kpa load rating for heavy storage of pallets, all completed in a timely fashion in less than 3 weeks from order to completion.

By using innovative modular designs we are able to supply cutting edge storage and space solutions on time and on budget."

— **Scott Barker**

Director/Sales Manager



Noble Park



SITE

Noble Park

FUNCTION

Office Space & Storage

DESIGN

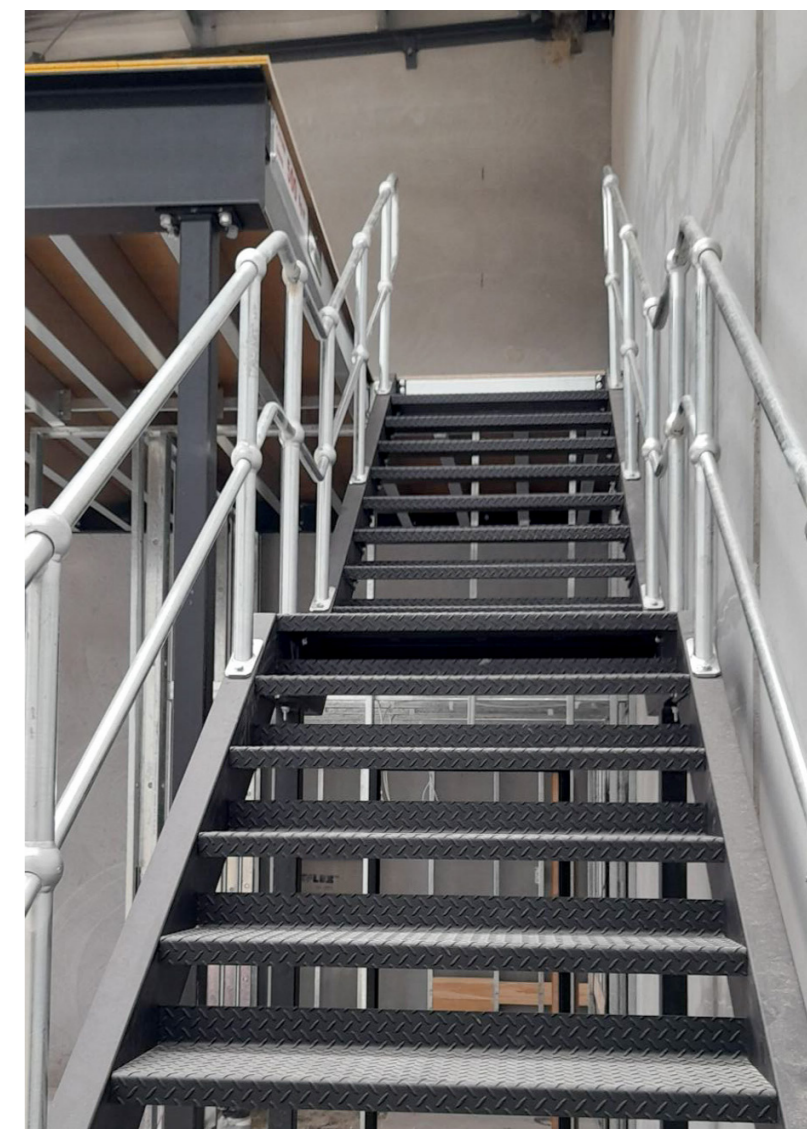
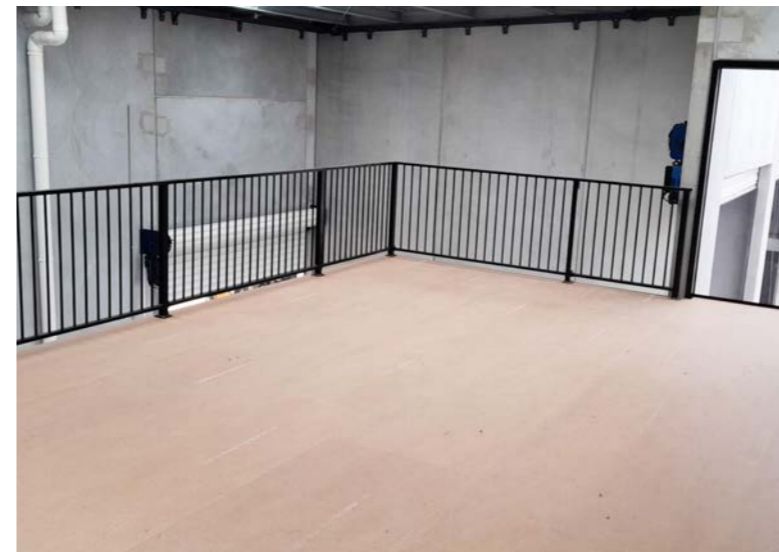
- 2m²
- 3 kpa (300kg per m² load rating)
- 22m Structaflor Particleboard Flooring
- 200mm Floor height
- Mezzanine attached to existing concrete panel walls along with another free-standing Mezzanine
- Galvanised balltube handrails
- Steel stairs with Checkerplate treads

OVERVIEW

This job included two mezzanine floors, one which spanned over an existing office and dispatch area which would later have an office installed on it, and then a free standing mezzanine floor located in a central position in the warehouse to increase storage over the top of a warehouse office. The works provided by Dynamic allowed the client to increase their office space allowing them to employ a further 35 staff, while losing no storage space by storing goods above.

Working with the clients builder we were able to make the posts land in positions that worked for the use they were intending below. As well as providing the builder with a full engineering package meaning their application for planning and building permits was straightforward.

Keil & Co



SITE

Keil & Co Torquay

FUNCTION

Storage Space

DESIGN

- 160m²
- 5 kpa (500kg per m² load rating)
- 22m Structaflor Particleboard Flooring
- Unit 2/4 3400mm Unit 1/3 4000mm
- Floor height
- Structural Posts and Beams
- Heavy Duty Steel Staircase with open Checkerplate treads and galvanised balltube handrails.
- Black Powdercoated Balustrade.

OVERVIEW

It was great to be a part of this project for Keil & Co.

The project involved the construction of four mezzanines, each dedicated to a separate unit, enhancing the spatial efficiency, functionality and storage room of the overall structure. The mezzanines were customized to meet the unique requirements of each unit, with the sizing of the mezzanines being, Unit 1 at 49M², Unit 2-3 at 43M² and Unit 4 at 25M². This showcases how we can tailor each design to cater to the specific needs of each unit.

Beel Plumbing



SITE

Beel Plumbing, Hastings

FUNCTION

Office Space

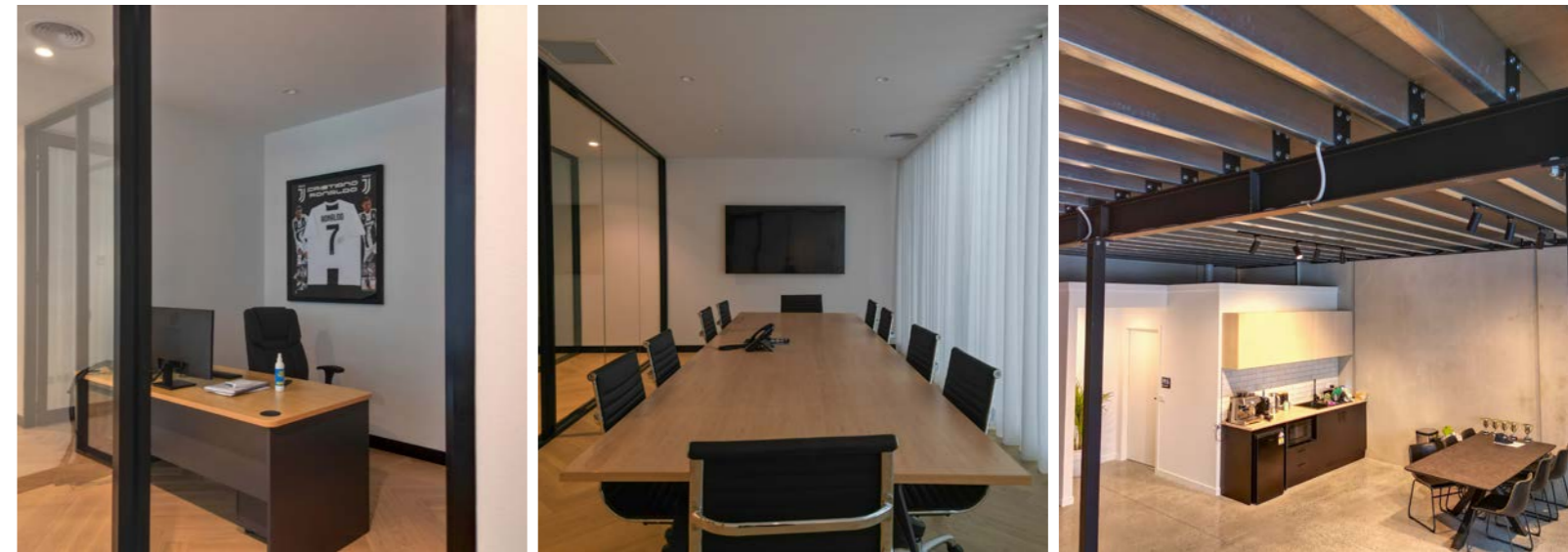
DESIGN

- 76m2
- 3kpa (300kg per m2 load rating)
- 22m Redtongue Particleboard Flooring
- 3400mm Floor height
- Structural Posts and Beams are grit blasted and painted in Black Finish
- Steel Staircase with checkerplate treads and galvanised balltube handrails.
- Steel Stud Walls, Insulated
- Plaster Ceiling throughout with Square

OVERVIEW

We were thrilled to be a part of this recent project completed for Beel Plumbing.

The project involved the construction of a raised mezzanine office, which was designed beautifully with timber flooring, glass doors and partitions with stunning sheer curtains hanging across the front and side of the boardroom. Below the mezzanine floor a lovely break area and kitchen was designed to give their employees the space to chill out and relax during their breaks.



DNA Health Group



Site

DNA Health Group, Cheltenham

Function

Storage and Health & Fitness

Design

- 110m²
- 3kpa (300kg per m² load rating)
- 19mm F11 Structural Plywood Flooring
- 4500mm Floor height
- Structural Posts and Beams are grit blasted and painted in Charcoal Primer Finish.

Overview

Recently, we successfully executed a remarkable project for DNA Health Group, enhancing their operational capabilities.

Our team seamlessly added an additional level to their warehouse, not only expanding their available space but also enabling them to better serve a greater number of individuals with their health requirements. This upgrade not only prioritizes efficiency but also ensures ample storage capacity to support their growing initiatives.



Customer Feedback

We strive to offer the best customer service and experience from the start of a project to the after care. We take pride in our work and are humbled when our clients leave us positive feedback.

Campbell Graham, Manager

Keables Pty Ltd, WEST FOOTSCRAY

...Thank you also for your excellent advice, installation and service during our fit out. You've been a pleasure to deal with and have made a very stressful exercise a whole lot easier..."

General Manager

Designer Plants, CARRUM DOWNS

...DWS were super quick and efficient in installing the mezzanine and developed a thoughtful design which has greatly assisted our business. The outcome was a high quality, well installed and functional extension almost doubling storage capacity for our business. Highly recommend this company to deal with..."

Customer Service Manager

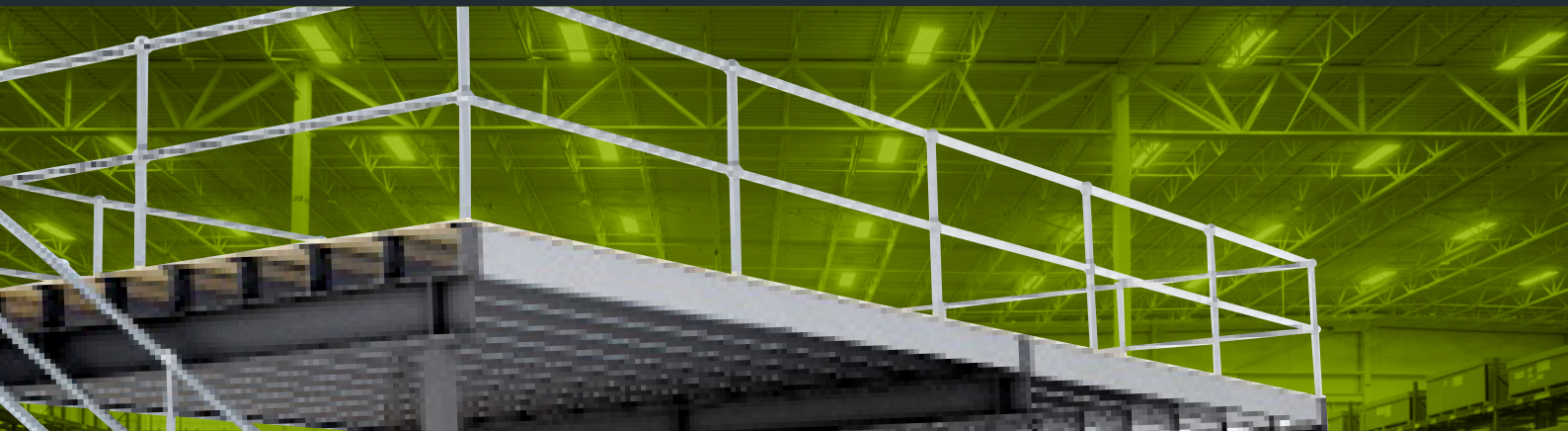
Racing Information Services, VICTORIA

...It's been a pleasure working with you all and I can't speak highly enough of the work you have completed within the time frame..."

Operations Director

Life Fitness Australia

...Our new mezzanine floor has been a great success and has saved us a great deal of time and money from relocating to alternative premises. Many thanks to all at Dynamic Warehouse Solutions..."



Ph. 1300 668 468
sales@dynamicws.com.au
www.dynamicws.com.au

 **dynamic**
WAREHOUSE SOLUTIONS