

Modular Mezzanine Floor Solution

An innovative mezzanine
flooring solution



Ph. 1300 668 468

sales@dynamicws.com.au

www.dynamicws.com.au



Become a Hi-Span Authorized Reseller

A Highly Versatile, Modular
Mezzanine Flooring System

Experience the features and benefits from
using this modular system on your next project

☎ **Call Us Today**

BECOMING A RESELLER

Enjoy the convenience
of a fully engineered,
modular system.

Starting at **\$200p/m²**



Streamline your business offering with
this fully engineered, modular system.
Enjoy the confidence of knowing you
can provide your clients with a quick,
calculated and quality mezzanine system.

BENEFITS

Why Choose Hi-Span?

Save Time



Quick Installation



Quality Product

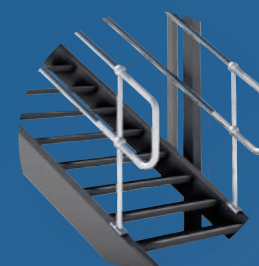


Trusted Provider



Save your time and effort not dealing with
engineers and drafts people. This system
is fully engineered and can be configured
as a completely freestanding structure.

FEATURES



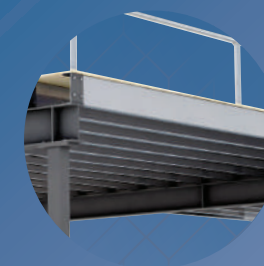
Pre-Engineered

Full Engineers Certification of Design



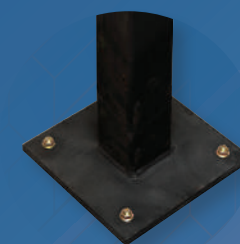
Full Compliance

Meets all Australian Standards
& Building Codes



Quick Installation

Fast project turnaround with
minimal disruption



No Foundations

Our Pre-Engineered Baseplate Design
means no foundations are required to
build.



In-stock

Kits and Components are always
in-stock for quick delivery & install



Quality Finish

Steel is grit blasted and painted
charcoal colour

Modular Mezzanine System

Standard size components

We ensure components are in-stock and ready to install to save you time and money

STRUCTURAL STEEL BEAMS

Available Beam Lengths

Hot Rolled Structural Steel 'I' Beams.
Prefabricated and painted in attractive charcoal finish.

Available Sizes

3200mm, 3600mm, 4000mm, 4800mm



STRUCTURAL STEEL COLUMNS

Available Column Heights

Prefabricated in attractive charcoal finish.
100 x 100 SHS column
300 x 300 Engineered base plate.

Available Sizes

To suit mezzanine heights
2580mm, 3000mm, 3400mm

PURLINS/FLOOR JOISTS

Purlin Lengths

Rolled and punched for each project.
Zinc finish.

Available Sizes

To suit mezzanine size
Clear spans up to 6 meters in length.



LOAD RATINGS

Available Load Ratings

3 Kpa (300kg per m²)
for general storage and office areas.

5 Kpa (500kg per m²)
for heavy storage areas.

Engineers Certificate Included

Every mezzanine comes with an engineers certificate of design to your required load ratings

Load Rating Requirements

Speak to us about what beams and purlins are required to achieve your desired load rating.

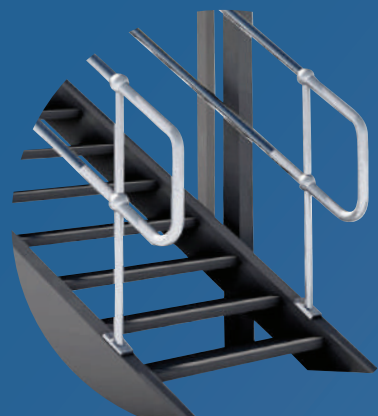
Components	Standard Sizes			
Beam Span	3200mm	3600mm	4000mm	4800mm
Floor Height	2580mm		3000mm	3400mm
Purlin Span	Fully customized to suit your project			

Stair Options

Our team of experts has worked together to create a steel staircase that works across all functions and facilities.

It is fully compliant with Australian Standards and Building Code of Australia.

STEEL STAIRS



Steel Stair

Attractive charcoal painted finish

Available In-Stock Sizes

To suit floor heights.

2580mm, 3000mm, 3400mm

FEATURES

Our steel stairs are made from Australian Steel, it's strong, durable and looks great.

Checker-plate treads

Non-slip, textured finish



3 Sizes Available

To suit 2580, 3000, 3400mm floor heights



Galvanized Finish

Galvanized ball-tube handrails with kick-plate



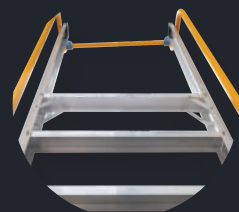
Fully Compliant

Fully compliant to Australian Standards 1657



Stylish Finish

Grit blasted and painted charcoal finish



MEZZALAD

Folds Flat

Ideal For Tight Spaces



Fully Approved

Fully approved access ladder



Custom Height

Manufactured to suit your mezzanine height



Stylish Look And Finish

Our structural steel is finished in a modern charcoal colour.

It creates a professional and smart look to any warehouse space.



Handrail Options

Our handrails and balustrades are manufactured to fully comply with the Australian Standards and Building Codes.



GALVANIZED BALL TUBE HANDRAILS

Galvanized Ball Tube Handrails

A cost effective solution for warehouse and storage areas. Includes top rail, mid rail and kick plate to comply to regulations for storage areas.

Fully Compliant

Meets Australian Standards & Building Codes. ✓

Cost Effective

A standard product that is already finished. ✓

Ready to Install

Components are in-stock with fast delivery. ✓

POWDER COAT BALUSTRADE

Powder-coat Balustrade

Ideal for use in public retail spaces, offices, lunchrooms or working areas.

Fully Compliant

Meets Australian Standards & Building Codes. ✓

Multi Functional

Perfect for use in public retail, offices, lunchrooms and working areas. ✓

Long Lasting, Hard Wearing

Our galvanized ball tube handrails are super hard wearing and stay looking good longer. ✓

Gate Options

Our handrails and balustrades are manufactured to fully comply with the Australian Standards and Building Codes.



SLIDING ACCESS GATE

Budget Sliding Access Gate

A cost effective solution for warehouse and storage areas for occasional pallet loading.

Cost Effective

A standard product that forms part of the ball-tube handrail system.



Ready to Install

These components are in-stock with fast delivery.



ROLL-OVER GATE

Roll-Over Gate

Safety gates have a light-weight, fail-safe, rollover operation that are designed to protect personnel at opening points on the mezzanine floor. Creating a constant fall protection at all times ensuring the safety of all personnel.

Fully Compliant

Meets all Australian Standards and Building Codes.



Choice of Finish

We have a range of options for powder coat colour.



Additional Safety

Ensure all staff are safe with constant fall protection.



SLIDING ACCESS GATE

Premium Sliding Access Gate

Sliding Gate on track system with ball-bearing rollers. Up to 4 meter wide openings. Yellow Powder coated finish.



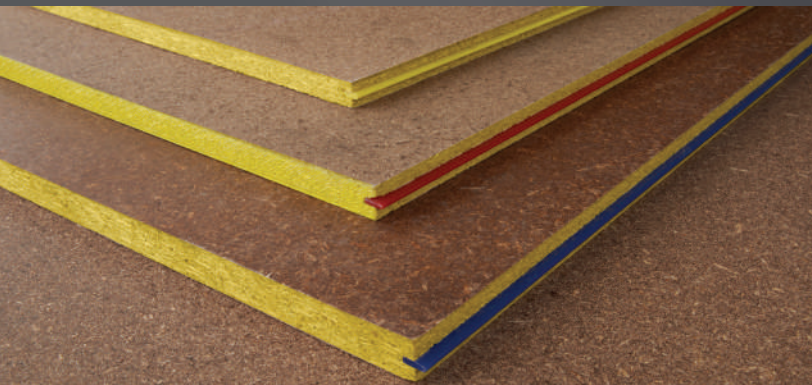
Safety First

Our Roll-Over Gates offer the safest option. They also are the best for accessibility and are the most user-friendly.



Flooring Options

Our team of experts will work with you to identify and recommend the best flooring solutions for your specific needs. Whether it's for a new office space or storage for pallets we have the solution.



FLOORING OPTION

Particle Board – Structaflor®

Ideal for general storage and office use. Not recommended where pallet jacks are used. It is a suitable substructure to be overlaid with carpet tiles for office environments.

Available In-Stock Sizes

19mm, 22mm, 25mm

Easy to install

Simple to lay and fix to the floor structure.



Cost Effective

A standard product available in-stock.



Choice of Finish

These components are in-stock with fast delivery.



FLOORING OPTION

Plywood – F11 Structural Flooring

The strongest, lightest and most versatile flooring product made from a renewable resource. This strong and durable pre-sanded panel is recommended for high point loading where pallet jacks and shelving systems are in use.

Available In-Stock Sizes

19mm, 25mm

Strong and Durable

An engineered product, plywood boasts uniform strength in any grain direction.



Easy to install

Simple to lay and fix to the floor structure.



Finished Floor

Plywood is a finished floor finish making it a time saving and cost effective.



Fix to Concrete Options

With the rise of concrete tilt panel warehouse construction, Hi-Span have developed the following products to minimize posts and utilize existing concrete panel walls. Where free-standing is not a priority.



FIX TO CONCRETE OPTION

Wall Bracket

Heavy duty structural steel bracket. Pre-Engineered and painted in an attractive charcoal finish.

Easy to install

Simply fixes to the concrete panels with masonry anchors as specified by engineer.



Cost Effective

Minimizes the need for columns.



Versatile

Ideal for use over existing offices or toilets where columns cannot be used.



FIX TO CONCRETE OPTION

Wall Angle

Heavy duty structural steel angle. Pre-Engineered and painted in an attractive charcoal finish.

Available In-Stock Lengths

4000mm, 4800mm

Easy to install

Simply fixes to the concrete panels with masonry anchors as specified by engineer.



Cost Effective

Minimizes the need for beams and columns.



Versatile

Ideal to utilize existing concrete panels instead of traditional columns and beams.



Completed Projects



Riddell Airfield

A great job completed recently at Riddell airfield in Victoria. We installed three identical mezzanine floors in three separate hangers to provide cost effective storage.



The mezzanines feature clear spans underneath to park aircraft and maintenance areas. Hi-span was ideal and a Fast and Economical solution for this client.

Scope of Works:

- ~ 3 kpa Loading
- ~ 22mm Particleboard Flooring
- ~ Steel stairs



Farming Storage, Waurin Ponds

This job was carried out recently for a client to maximize Storage on the family farm in Waurin Ponds.



Scope of Works:

- Installation of 108m² Mezzanine Floor with a load rating of 500Kpa (500kg per m²)
- 19mm Plywood Flooring
- Steel stairs
- Galvanized Ball-Tube Handrails to the edges of the Mezzanine with a sliding gate
- Installation of Pallet Racking



Kalow Holdings

Kalow holdings approached us to design and construct a mezzanine storage structure. The brief was to provide a clear span mezzanine to maximize storage of machinery and equipment and be cost effective.

Our Hi- Span modular system enabled us to provide a cost effective pre-Engineered solution to meet design and time requirements and exceed their expectations.

Scope of Works:

- 3 kpa (300kg per m² load rating)
- 22m Structaflor Particleboard Flooring
- 3400mm Floor height
- Mezzanine attached to existing concrete panel walls
- Galvanized ball-tube handrails
- Custom Safety Sliding gate in powder-coated yellow



Chat to your dedicated account manager today about your project requirements.

sales@dynamicws.com.au

Completed Projects



Industrial Yarn

A small storage mezzanine installed for a client in Campbellfield Vic. The Hi-Span Mezzanine features plywood flooring a mezzalad access ladder which folds flat when not in use.

This installation uses our wall angle fixed to the concrete tilt panels. This meant that there were less posts and beams required, needing only to be across the front of mezzanine.



Storage Mezzanine, Seaford

This project is a great example of a Hi-Span Mezzanine using our wall angle fixings. The wall angles fix the mezzanine to the existing concrete tilt slab allowing the mezzanine to span from wall to wall. This means no columns are required.

Scope of works:
 ~ 3 Kpa Loading (300kg load capacity)
 ~ 22mm Particleboard Flooring
 ~ 6M Clear span.
 ~ Steel stairs



Black Snake

A nice storage mezzanine installed over the top of a production area which required clear access under the mezzanine with minimal posts.

Our modular Hi-span system works well providing large clear spans under the mezzanine and a 5kpa load rating for heavy storage of pallets, all completed in a timely fashion in less than 3 weeks from order to completion.

Scope of Works:
 - 260m2
 - 5 kpa (500kg per m2 Load rating)
 - 19mm Structural Plywood Flooring
 - Yellow Powder-Coat Safety pallet loading gate
 - 3400mm Floor height
 - Freestanding Design
 - Steel stairs with Checkerplate treads
 - Galvanised balltube handrails



Chat to your dedicated account manager today about your project requirements.

sales@dynamicws.com.au

Completed Projects



Event Retail

A recent 200m² mezzanine completed using our Hi-Span Mezzanine System. The project was complete with Led panel lighting beneath and custom yellow painted posts.

Scope of Works:
~ 3 kpa Floor Loading
~ 22mm Particleboard Flooring
~ Safety rollover loading gate



BCA Commercial

We installed two Hi-Span storage mezzanines recently for a client in Melbourne. The project was complete with stairs, a mezzalad access ladder and Yellow Powder-coat safety loading gate.

Scope of Works:
- 5 kpa (500kg per m2 Load rating)
- 19mm Structural Plywood Flooring
- Yellow Powder-Coat Safety pallet loading gate
- Led lighting underfloor
- Steel stairs with Checkerplate treads
- Galvanised balltube handrails
- Freestanding Design



Chat to your dedicated account manager today
about your project requirements.

sales@dynamicws.com.au

Completed Projects



Eat Well Foods, Kyneton

We installed a 5kpa 380m² mezzanine floor using our pre-engineered Hi-Span modular system. The client wanted to utilize unused space over their existing cool room. We were happy to accept the challenge. We were able to accomplish this task by propping the ceiling from the inside to make it safe to work on. Then we penetrated the ceiling to install our columns, beams and purlins. We then re-suspended the ceiling causing little disruption to the business production line.

Scope of Works:

- 5Kpa (500Kg per m²) Load rating
- Custom steel stairs with landing.
- Custom roll-over style pallet loading gate
- Galvanized Ball-Tube Handrails
- 4000mm Floor height



Plumbtec, Ballarat

Dynamic were very pleased to be part of this recent project. Plumbtec engaged us early in the planning process to design, supply and install a 430m² Mezzanine floor in their new Alfredton store. The mezzanine design was fully fitted out with offices below and a showroom and open storage area above!

Scope of work:

- 430m²
- 3Kpa (300Kg per m²) Load rating
- Steel stairs
- Roll-over style pallet loading gate
- Black powder-coated balustrade to showroom area
- Showroom fit-out on mezzanine.

Chat to your dedicated account manager today about your project requirements.

sales@dynamicws.com.au

Completed Projects



Coburg Warehouse

A recent mezzanine installation for a client requiring a mezzanine for a home gym above and an enclosed room below. The project was complete with large sliding doors to store their collection of cars.

Our Hi-Span Mezzanine System worked out perfectly for this application.

Scope of Works:

- ~ 5 Kpa Loading capacity
- ~ Freestanding Design
- ~ 3400mm FFL
- ~ 19mm Plywood Flooring
- ~ Bondor Panel Walls to enclose under mezzanine
- ~ Large sliding doors
- ~ LED Lighting



Thomastown

A nice Hi-Span storage mezzanine recently completed for a happy client in Thomastown, Victoria.

The client was after a freestanding mezzanine for storage above whilst maximising floor space for a vehicle hoist and caravan storage.

Scope of Works:

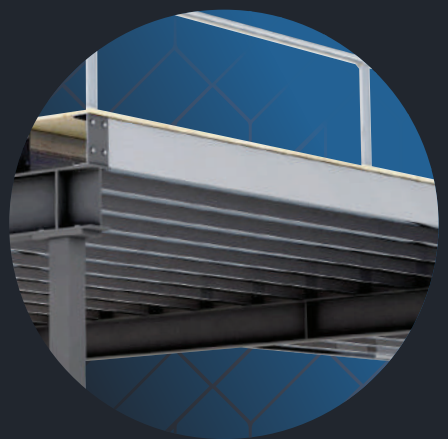
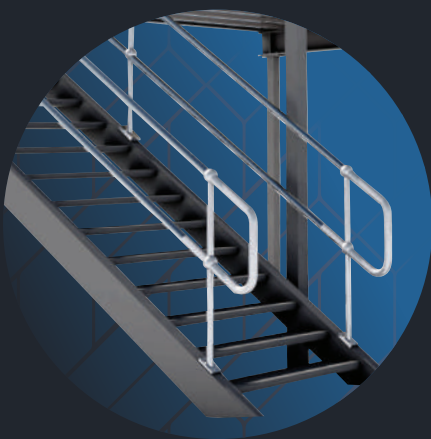
- 260m2
- 5 kpa (500kg per m2 Load rating)
- 19mm Structural Plywood Flooring
- Yellow Powder-Coat Safety pallet loading gate
- 3400mm Floor height
- Freestanding Design
- Steel stairs with Checkerplate treads
- Galvanised balltube handrails



Chat to your dedicated account manager today about your project requirements.

sales@dynamicws.com.au

V.08 2020.28.08



Ph. 1300 668 468
sales@dynamicws.com.au
www.dynamicws.com.au

